



①



10 min

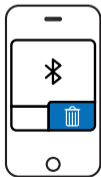
②



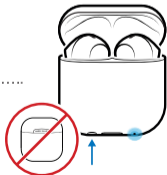
③



①



②



6 sec



## ENGLISH



## CONNECT AND USE

- ① Charge your JOY for a least 10 minutes before use.
- ② Open the charge case and keep the earbuds in place to enter pairing mode.
- ③ Select "Happy Plugs - Joy" on your phone/device to pair. Your earbuds are now ready to use.



## RESET TO FACTORY SETTINGS

- ① Delete "Happy Plugs - Joy" from your Bluetooth devices list.
- ② Make sure the charge case is charged. Put the earbuds in the charge case.
- ③ With the lid of the charge case open, press and hold the button on the bottom of the charge case for 6 seconds until LED flash 6 times.

The earbuds are now reset and ready to pair to your device. Just follow the "Connect and use" steps.

## CALLS

When using the JOY for phone calls, both earbuds are active.



If you wish to use only one earbud during a phone call, please put the other earbud into the charge case and close the lid.



## TOUCH CONTROLS

- |     |     |                                |
|-----|-----|--------------------------------|
| R   | × 1 | Play / Pause                   |
|     | × 2 | Next Track                     |
|     | × 3 | Previous Track                 |
| 2 s | × 1 | Call Answer / Call End         |
|     | × 2 | Reject Call                    |
|     | 2 s | Accept Call and End First Call |
| 2 s |     | Siri / Google Assistant        |



- |   |     |             |
|---|-----|-------------|
| L | × 1 | Volume Up   |
|   | × 2 | Volume Down |

## CHARGE CASE BUTTON

- |     |     |                 |
|-----|-----|-----------------|
| 6 s | × 1 | Battery Status  |
|     | 6 s | Reset Earphones |

## BATTERY LIGHT

- |           |        |
|-----------|--------|
| 0 - 20 %  | Red    |
| 20 - 80 % | Yellow |
| 80 - 100% | Green  |

Full instructions & FAQ available at:  
[help.happyplugs.com](http://help.happyplugs.com)